

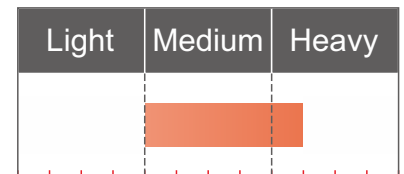
GC303-1SB

UNIQUE

Computerized walking foot single needle lockstitch sewing machine with step motor technology

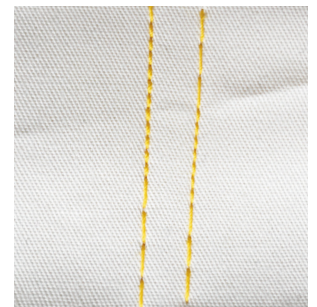
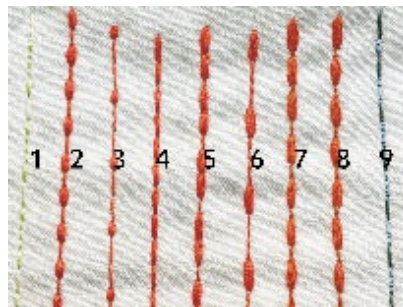
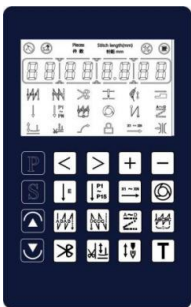


1-needle stitch



■ Features

- Walking foot feeding mechanism and large capacity hook
- With the latest step motor technology to control the fabric feeding mechanism.
- Precise digital stitch length adjustment by every 0.1mm, easy to use.
- With 9 built-in different patterns of seams.
- Back reverse stitching ultra-quiet and stable.
- Tight seam function - after trimming the length of the thread left is within 3MM.
- Buttons for supplement stitches can immediately switch it to 1/2 and 1/4 of the previous stitch length.



Suitable for leather, bag, luggage, mat, sofa and upholstery



MORE INFORMATION

UNIQUE

■ Technical Specification

Model	GC303-1SB
Max. speed	2,800sti/min
Lubrication	Automatic
Needle type	DPX17 (14-22#)
Max. stitch length	8mm
Pesser foot lift	Servo controlled
Bobbin thread winder	Built-in the machine head
Power	750W
G/N weight & volume	45/39kgs,750*255*495mm=0.095cbm
Complete set	With stand & table 73kgs, 0.182cbm